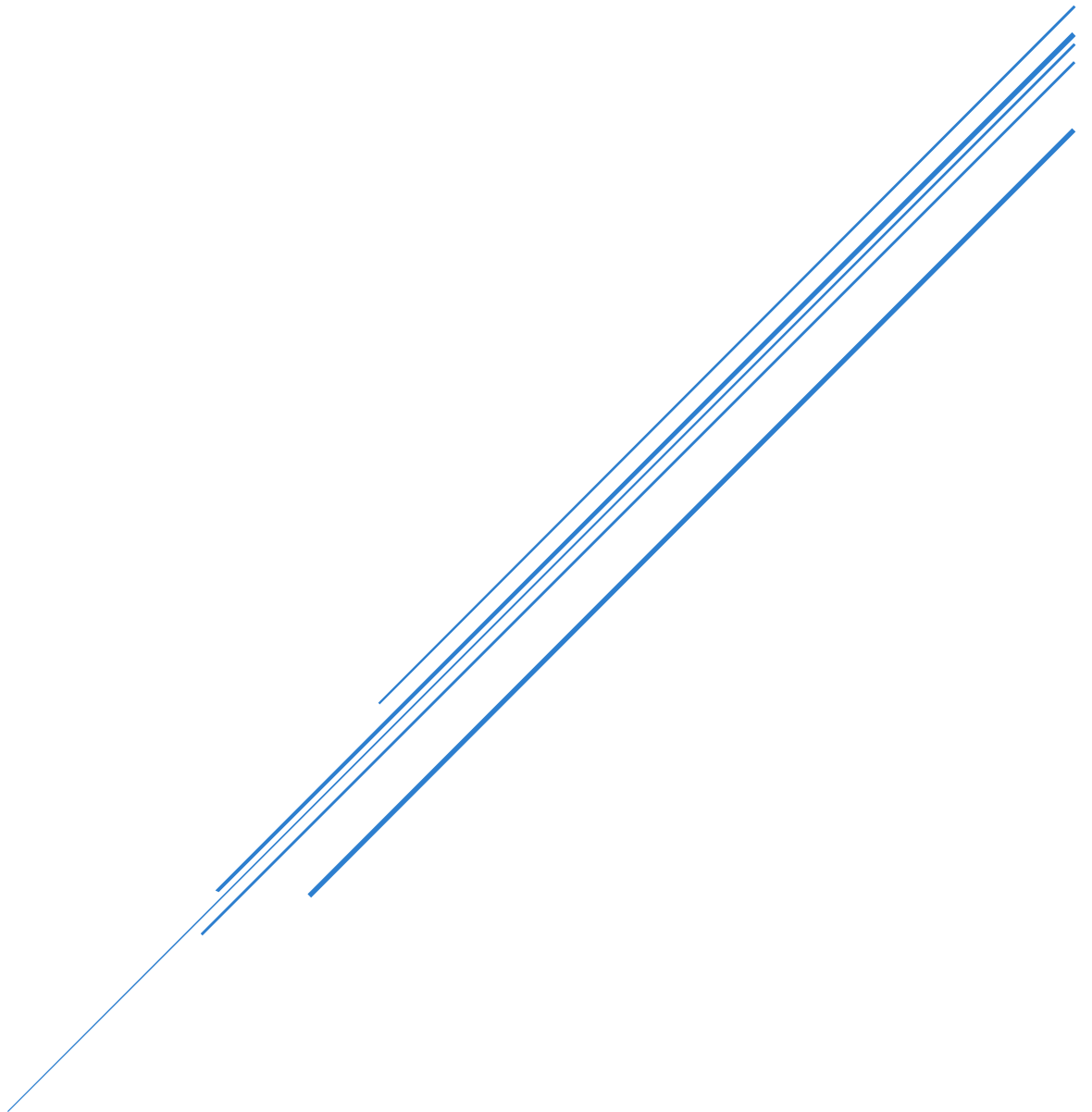


SUSS MICROTEC ACS200 COATER

The Karl Suss ACS 200 includes



ACS200 Coater

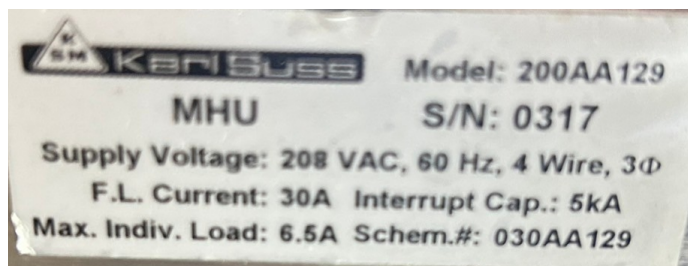
Suss MicroTec ACS200 Coater (No. 6303)



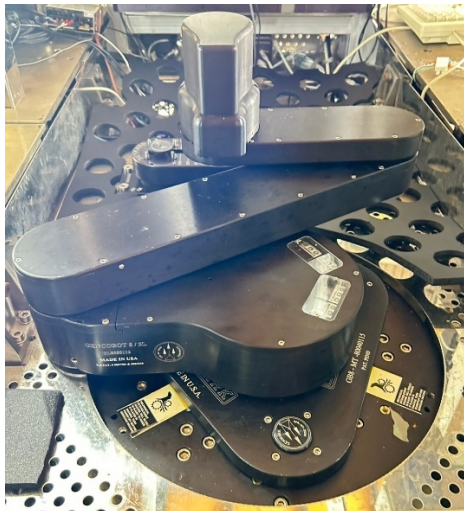
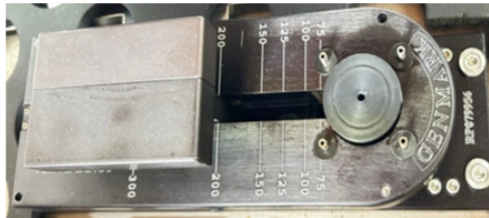
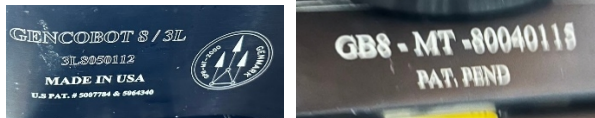
The Karl Suss ACS 200 includes:



Model: 200AA129



- Gencobot 8/3L wafer handling robot



Configuration: DEV Track 8"

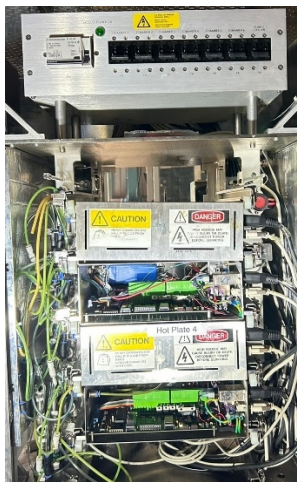
(1) Quantity: 2 coating machines (double chamber)



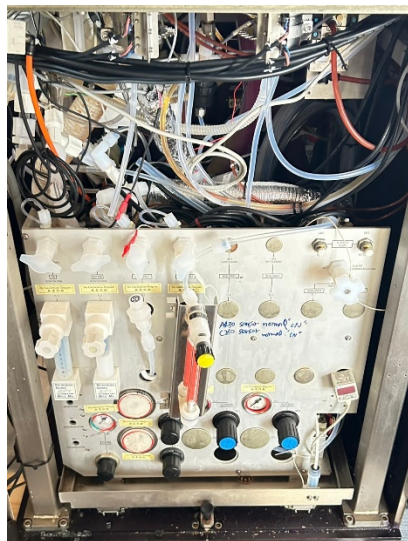
(2) Heating plate (double chamber)



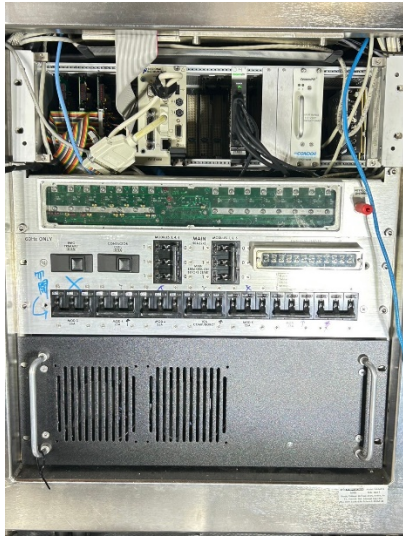
(3) Cooling plate (one set)



(4) Photoresist/coater: 2 (inches) Kit: Cybor pump and kit controller



(5) InLine system: None



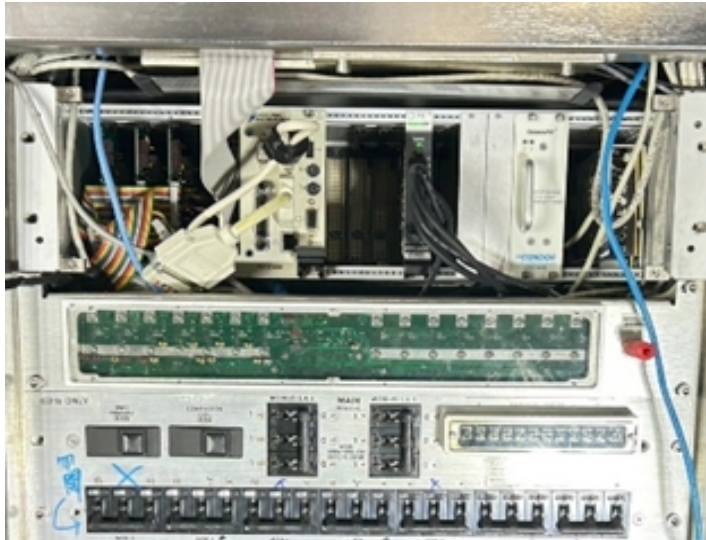
(6) Gen-mark robot



(7) Automatic supply system for solvent and developer: None



Power supply: 208 V, 3 phase, AC transformer:



Operation until 2024/11/15, complete equipment, no missing parts



